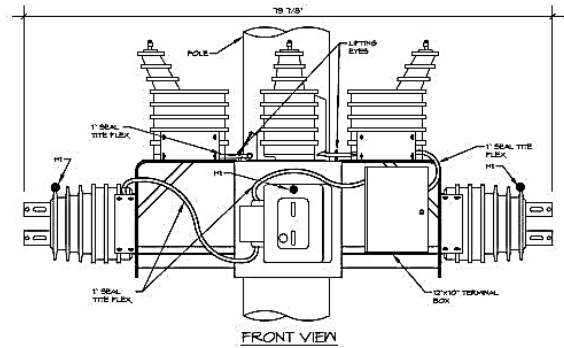


PMU- PRIMARY METERING UNIT

Primary metering units are designed for three-phase primary metering applications. They consist of current transformers (CT's) and voltage transformers (VTs) mounted on an aluminum frame and wired to a terminal strip inside of a NEMA 3R junction box. The assembly is then equipped for pole mount installation. Medium voltage instrument transformer combinations are available in voltage classes from 5 to 34.5 kV.



OVERHEAD TO UNDERGROUND

PMU Assembly

Stainless steel hardware is used throughout the construction. All secondary wiring is 12 AWG THHN/THWN wire enclosed in flexible, liquid-tight, armored conduit. The secondary wiring is then terminated within a NEMA 3R junction box on a screw-type terminal strip. Each instrument transformer has its own nameplate and a connection diagram is available for each transformer combination.

PRODUCT FEATURES

- Three-phase & Single-phase
- Dry type
- For outdoor use
- 60kV- 200 kV BIL available
- 50/60 Hertz
- Configurations available:

Single-phase:

1 CT & 1 VT

Three-phase, four wire:

3 CTs & 3 VTs

3 CTs & 2 VTs

Three-phase, three-wire:

2 CTs & 2 VTs

Transformer Ratios

Single-ratio instrument transformers are the standard offering. Secondary tapped transformers are also available to provide additional connection options.

Mounting Bracket

The mounting bracket is constructed of aluminum plate and extrusions welded together for strength. A pre-punched channel is provided to accommodate 5/8" through-bolts for pole mounting.

Test Reports

Test reports are available for individual CTs and VTs and can be e-mailed in various formats at the time of shipment.



JESSTEC
INDUSTRIES INC.
UTILITY PRODUCTS

www.jesstec.com